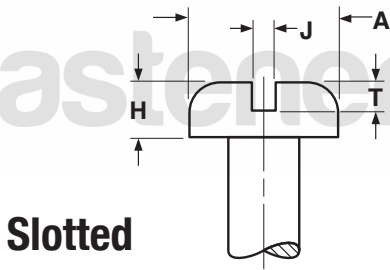


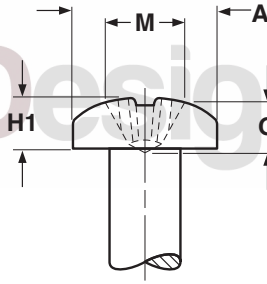
# HEAD DIMENSIONS

Pan  
Combo Pan

Fasteners By Design Inc.

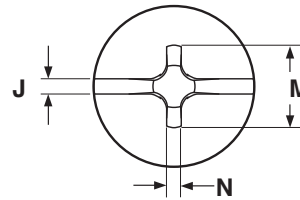
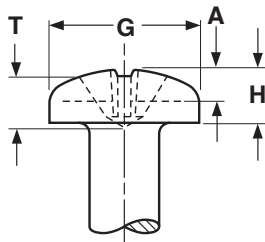


Slotted



Phillips

PAN HEADS FOR MACHINE SCREWS AND SEMS														ASME B18.6.3-2010
Nominal Size	A		H		H1		J		T		M	G		Phillips Driver Size
	Head Diameter		Height of Head				Width of Slot		Depth of Slot		Diameter	Dimensions of Recess		
	Max	Min	Slotted		Recessed		Max	Min	Max	Min		Recess Penetration Gaging Depth	Max	
			Max	Min	Max	Min					Ref			
0	.116	.104	.039	.031	.044	.036	.023	.016	.022	.014	.060	.032	.014	0
2	.167	.155	.053	.045	.062	.053	.031	.023	.031	.022	.097	.052	.034	1
3	.193	.180	.060	.051	.071	.062	.035	.027	.036	.026	.105	.061	.043	1
4	.219	.205	.068	.058	.080	.070	.039	.031	.040	.030	.115	.071	.053	1
5	.245	.231	.075	.065	.089	.079	.043	.035	.045	.034	.152	.072	.046	2
6	.270	.256	.082	.072	.097	.087	.048	.039	.050	.037	.159	.080	.055	2
8	.322	.306	.096	.085	.115	.105	.054	.045	.058	.045	.175	.097	.071	2
10	.373	.357	.110	.099	.133	.122	.060	.050	.068	.053	.192	.113	.089	2
12	.425	.407	.125	.112	.151	.139	.067	.056	.077	.061	.252	.124	.098	3
1/4	.492	.473	.144	.130	.175	.162	.075	.064	.087	.070	.274	.144	.118	3
5/16	.615	.594	.178	.162	.218	.203	.084	.072	.106	.085	.343	.173	.149	4
3/8	.740	.716	.212	.195	.261	.244	.094	.081	.124	.100	.382	.213	.190	4
1/2	.987	.958	.281	.260	.348	.325	.106	.091	.161	.131	.428	.260	.235	4



COMBINATION DRIVE PAN HEADS FOR MACHINE SCREWS																ASME B18.6.3-2010
Nominal Screw Size	G		H		J		A		M		T		N	Recess Penetration		Driver Size
	Head Dimensions		Slot Dimensions				Recess Dimensions						Recess Penetration			
	Head Diameter		Head Height		Width		Depth		Diameter		Depth			Recess Width		
	Max	Min	Max	Min	Max	Min	Max	Min	Max	Min	Max	Min		Min	Max	
4	.219	.205	.080	.070	.039	.031	.040	.027	.122	.109	.078	.060	.019	.071	.053	1
6	.270	.256	.097	.087	.048	.039	.050	.033	.166	.153	.091	.066	.028	.080	.055	2
8	.322	.306	.115	.105	.054	.045	.058	.041	.182	.169	.108	.082	.030	.097	.071	2
10	.373	.357	.133	.122	.060	.050	.068	.048	.199	.186	.124	.100	.031	.113	.089	2
12	.425	.407	.151	.112	.067	.056	.077	.055	.259	.246	.141	.115	.034	.124	.098	3
1/4	.492	.473	.175	.162	.075	.064	.087	.063	.281	.268	.161	.135	.036	.144	.118	3
5/16	.615	.594	.218	.203	.084	.072	.106	.076	.350	.337	.193	.169	.059	.173	.149	4