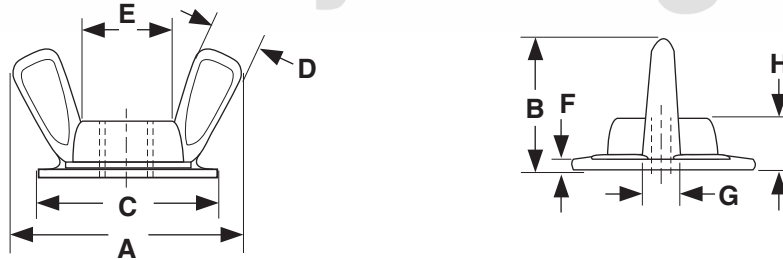


Washer Base Zinc Alloy **WING NUTS**

Fasteners By Design Inc.



| WASHER-BASED WING NUTS | | | | | | | | | | |
|------------------------|----------------------|-------------|-------------|--------------|-------------------------|-----------------------|---------------|------------------|------------------------|----------------------|
| Kanebridge Part Number | Dynacast Part Number | Thread Size | A | B | C | D | E | F | G | H |
| | | | Wing Spread | Total Height | Washer Outside Diameter | Individual Wing Width | Between Wings | Washer Thickness | Wing Thickness at Base | Boss & Washer Height |
| 0810NWA | 232416 | 8-32 | 7/8 | 7/16 | 5/8 | .207 | .250 | .032 | .125 | .182 |
| 1010NWA | 232417 | 10-24 | 7/8 | 7/16 | 5/8 | .207 | .250 | .032 | .125 | .182 |
| 1110NWA | 232418 | 10-32 | 7/8 | 7/16 | 5/8 | .207 | .250 | .032 | .125 | .182 |
| 1412NWA | 232521 | 1/4-20 | 1 | 1/2 | 3/4 | .234 | .312 | .035 | .140 | .205 |
| 1414NWA | 232621 | 1/4-20 | 1 1/8 | 37/64 | 7/8 | .260 | .375 | .040 | .150 | .225 |
| 3112NWA | 232523 | 5/16-18 | 1 | 1/2 | 3/4 | .234 | .312 | .035 | .140 | .205 |
| 3114NWA | 232623 | 5/16-18 | 1 1/8 | 37/64 | 7/8 | .260 | .375 | .040 | .150 | .225 |
| 3714NWA | 232625 | 3/8-16 | 1 1/8 | 37/64 | 7/8 | .260 | .375 | .040 | .150 | .225 |

| | |
|---------------------------------|--|
| Description | A zinc alloy nut featuring a wide-diameter, integral washer base with a recessed wing design. |
| Applications/ Advantages | Suitable for most wing nut applications, specifically in those where a separate flat washer would be used. Integral washer design eliminates need for other washers and speeds assembly time. Used with adjustment slots, oversized or offset holes, and soft surfaces such as wood or plastic. Popular in displays, furniture and storm windows. |
| Material | Nuts are made from the zinc die cast alloy Zamak #3 which conforms to the following chemical composition requirements-- Aluminum: 3.5-4.3%; Magnesium: 0.02-0.05%; Copper: 0.25%* max.; Iron: 0.10% max.; Lead: 0.005% max.; Cadmium: 0.004% max.; Tin: 0.003% max.; Zinc: balance (*Note: Most commercial applications will accept copper content within the range of 0.25-0.75% without rejecting the product). |

Fasteners By Design Inc.

NOTE: There is no single standard for washer-based wing nut dimensions. These values are offered as a guide; deviations from these specifications may occur.