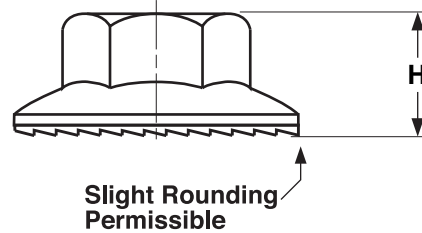
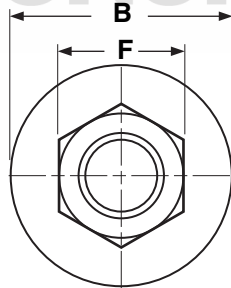


# NUTS

## SERRATED LARGE FLANGE

Free-Spinning Lock-Nut

# Fasteners By Design Inc.



SERRATED LARGE FLANGE HEX LOCK NUTS							
Nominal Size or Basic Major Diameter of Thread		F		B		H	
		Width Across the Flats		Flange Diameter		Nut Thickness	
		Max	Min	Max	Min	Max	Min
1/4	0.2500	.437	.428	.728	.687	.312	.281
5/16	0.3125	.500	.489	.823	.790	.375	.343
3/8	0.3750	.562	.551	.915	.884	.406	.390
1/2	0.5000	.750	.736	1.205	1.175	.515	.485
5/8	0.6250	.938	.922	1.360	1.280	.640	.600

<b>Description</b>	Hex nut with a circular base flaring out from the bottom of the nut that is 6% to 25% wider than the flange of a standard serrated flange nut. The bearing surface of the flange has serrations which displace material on the mating surface when the nut is wrenched into place, forming a connection that resists loosening.		
<b>Applications/ Advantages</b>	Offers the same advantages of the standard serrated flange lock nut, including reusability, but will span even larger holes. Also has a more uniform bearing-stress to clamp-force ratio than the standard serrated flange nut. Grade 5 nuts are designed to be used with Grade 5 screws and bolts; Grade 8 nuts are designed to be used with Grade 8 screws and bolts.		
	Low Carbon	<b>Grade 5</b>	<b>Grade 8</b>
<b>Material</b>	Low carbon steel	Nuts shall be made from a carbon steel which conforms to the following chemical composition requirements-- <b>Carbon:</b> 0.55% max.; <b>Manganese:</b> 0.30% min.; <b>Phosphorus:</b> 0.05% max.; <b>Sulfur:</b> 0.15% max.	Nuts shall be made from a carbon steel which conforms to the following chemical composition requirements-- <b>Carbon:</b> 0.55% max.; <b>Manganese:</b> 0.30% min.; <b>Phosphorus:</b> 0.04% max.; <b>Sulfur:</b> 0.05% max.
<b>Hardness</b>	Rockwell C40 minimum	Rockwell 32 HRC max	<b>1/4 thru 5/8" diameters:</b> 24 - 32 HRC <b>Over 5/8 thru 1" diameters:</b> 26 - 34 HRC
<b>Plating</b>	See Appendix-A for plating information	Grade 5 Large Flange Nuts are usually supplied in zinc finish	Grade 8 Large Flange Nuts are usually supplied in zinc yellow finish