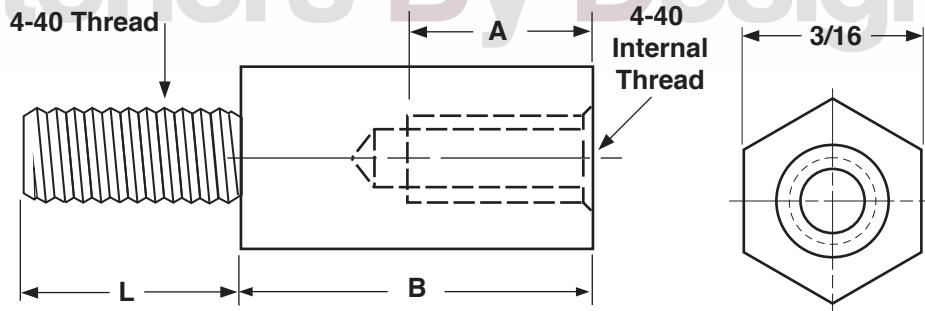


# Fasteners By Design Inc.



3/16 HEX JACKSCREWS									
Part Number	A	L		B		Across the Flats		External Thread Size	Internal Thread Size
	Internal Thread Depth	Length of External Thread		Body Length		Max	Min		
	Min	Max	Min	Max	Min				
100304JM	.100	.188	.182	.1875	.1825	.1875	.1825	4-40	4-40
100404JM		.250	.245						
100504JM		.313	.307						
100604JM		.375	.370						
100704JM		.438	.432						
100804JM		.500	.495						
100904JM		.563	.557						
101004JM		.625	.620						

<b>Description</b>	A hex shaped mechanical device that has an opening with a partial internal thread at one end, and an externally threaded post at the opposite end.
<b>Applications/ Advantages</b>	Used to mount D-subminiature connectors to a metal panel, such as the housing of a personal computer tower.
<b>Material</b>	<i>Steel:</i> Low Carbon Steel <i>Stainless:</i> Class 303 Stainless



# Fasteners By Design Inc.